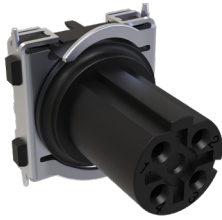


2023 / 2024

**Product News**





### **M12 PCB connector in SMT, shielded / unshielded, straight (ruggedized)**

#### **Robust design with lowest overall height**

M8 in coding: A3, A4, D4 male and female

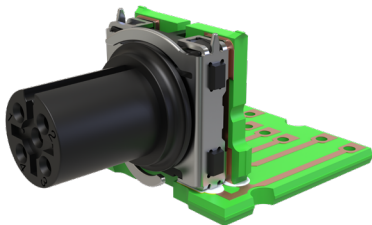
M12 in coding: A4, A5, A8, B5, D4, L4 male

A4, A5, A8, B5, D4, L4, X8 female

(other coding's on request)

- Lowest overall height enables miniaturization with only 16 mm height
- Largest soldering surface for high anti-rotation torque
- Vibration-resistant according to railroad standard

SAFE and COMPACT due to robust solder joint connection and low height

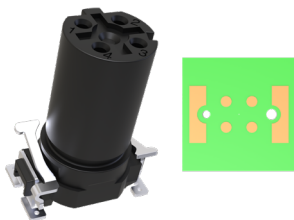


### **M12 PCB connector in SMT, shielded / unshielded, 90° (ruggedized)**

#### **Minimum space requirement on the PCB with RJ45 compatible dimensions**

- Minimum space requirement on the PCB
- 90° variant pre-assembled on the PCB and is then shock and vibration-proof soldered onto your PCB
- All straight coding's are available in 90° Versions

COMPACT due to minimum space requirement on the PCB



### **M8/12 PCB connector in SMT, shielded / unshielded (slimline)**

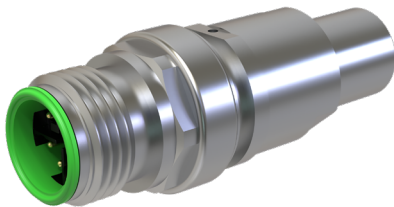
**Extremely robust due to flexible contact terminal design**

M8 in coding: A3, A4 female (17mm), D4 female (18mm), A3, A4 male

M12 in coding: A4 female (18mm), D4 female (17mm and 18mm) (other coding's and heights on request)

- Footprint compatible with common available circular connectors in SMT
- Female height: 17mm and 18mm
- SMT connection technology with integrated One-piece shield plate

FITTING YOUR APPLICATION. Drop-in replacement with market-standard footprint design

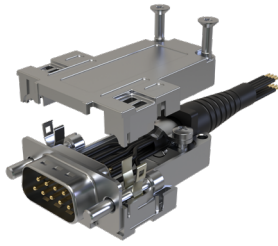


### **M12 V4A male X-coded with crimp terminals**

**Meets special hygiene requirements, cleanliness, and corrosion resistance**

- For demanding industrial environments where stainless steel comes into its own
- It can be easily treated with common cleaning and disinfectants and can also encounter salt water
- The plastics used, are certified according to EN 45545-2 for railroad applications

FAST and SAFE for challenging demands



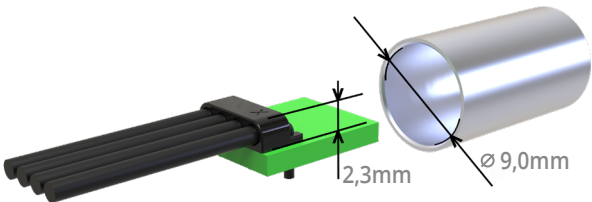
## **FLEXLOCK®**

### **All common locking types in one D-Sub hood**

9-pin, 15-pin and 25-pin with 180° and 45° cable outlet

- All common locking types including Quick Lock®: push-pull quick lock
- Cover with special shielding design for high-quality EMC applications
- Unbreakable metal retaining spring

Your modular system for your hood application.  
FITTING YOUR APPLICATION



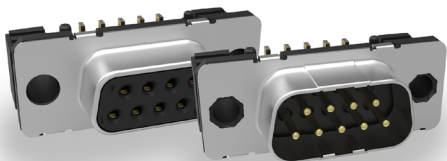
## **Low Profile Wireclip**

### **Wire-to-board solutions with the ultra-flat installation height of 2.3 mm**

- space-saving and particularly economical clips
- Wire size AWG22 (0.35 mm<sup>2</sup>).
- Process and functionally reliable contacting of stranded wire and single wires on the PCB

COMPACT and SAFE for sophisticated and economical PCB connection

# **High Performance Connectors**

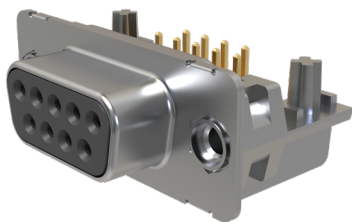


## **„SMALL SPACE“ SMT D-SUB CONNECTOR**

### **25% MORE SPACE ON THE PCB**

- Shortened design for more space on the PCB
- Eurostyle SMT D-Sub version
- Solid, full metal SMT connecting elements, firmly connected to the metal housing

COMPACT and SAFE thanks to shortened design and outstanding shielding properties



## **Ultra-flat D-Subs**

### **For space-saving D-Sub applications**

- Smallest installation height in the D-Sub range of only 1.2mm above the PCB
- For demanding D-Sub applications in 9, 15, 25 and 37-pin for standard and reverse applications
- Maximum stability on the PCB thanks to die-cast zinc solder anchors

Tailor-made for your application. FITTING YOUR APPLICATION

# About us



## Certificates

- For your safety
  - IATF 16949
  - ISO 9001
- For our environment our production locations are ISO 14001 certified
- UL approvals



## 850 employees

- German-Hungarian company
- Production in Hungary
- Customer Service in Germany
- Satisfied customers



## More than 40 years of experience

- Products for highest physical stability in extremely challenging networks
- Many innovations
- Customer-specific solutions

**PROVERTHA**<sup>®</sup>  
CONNECTORS, CABLES & SOLUTIONS

**FITTING YOUR  
APPLICATION**

## Connectors, Cables & Solutions GmbH

Westring 9

75180 Pforzheim · Germany

Tel.: +49 7231 774 66

Fax: +49 7231 774 44

[service@provertha.com](mailto:service@provertha.com)

[provertha.com](http://provertha.com)

