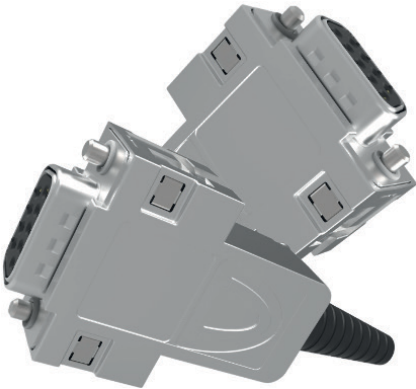


**PROVERTHA®**  
CONNECTORS, CABLES & SOLUTIONS

FITTING **YOUR**  
APPLICATION

# FLEX**LOCK**



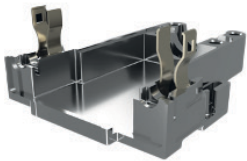
[provertha.com](http://provertha.com)

Flexible usage in demanding applications

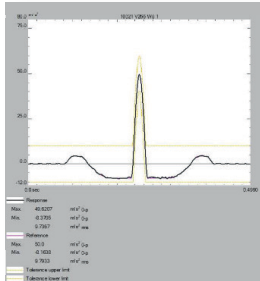


## Patented multiple locking system in one nickel-plated D-Sub full metal hood

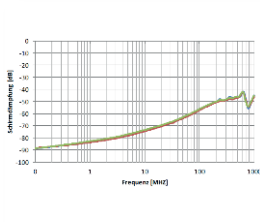
- Standard screw locking
- Quick Lock (Push-Pull) quick locking
- Slide lock
- „Flying“ cable-to-cable connection



- Functional reliability thanks to break-proof housing locking spring made of metal

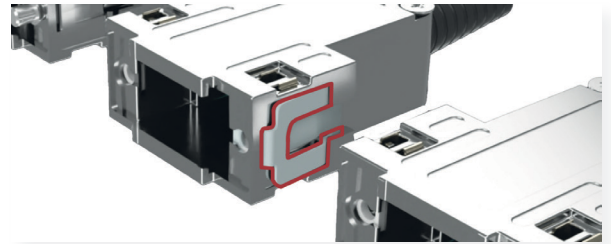


- For highest mechanical / dynamic stresses  
Shock and vibration-proof  
EN 61373 Category 2



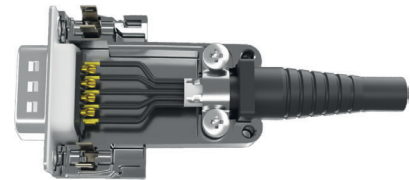
- For high EMC requirements achieved by special shielding design

## Locking in seconds: Quick Lock Push Pull



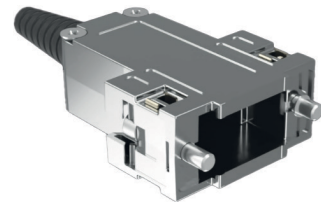
- Secure locking with an audible click when locked
- Shock and vibration-proof (certified EN 61373 Cat. 2)
- Blind locking in difficult installation locations simply push in until you click

## Easy handling during assembly thanks to only few individual parts



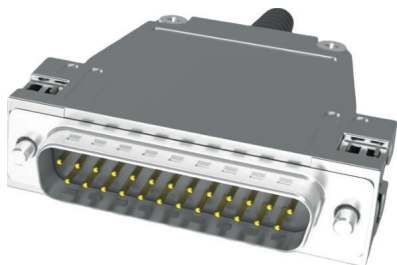
- Retaining spring pre-assembled
- Cable reduction pre-assembled
- Locking screws or QL locking spring or insert nut pre-assembled
- A version with cover screws pre-mounted is available on request

## Hood as a complete set protected in a bag



- The complete set includes the internal cable clamp and the cable bushing for direct assembly at the installation site
- The nickel-plated surface of the hoods is in a separate chamber of the two-chamber bag protected from scratches and damage

## Series 217: Cable exit 180°



The FLEXLOCK D-Sub hoods are as series 217 with straight cable exit (180°) available in 3 housing sizes for 9-pole, 15-pole and 25-pole D-Sub connectors

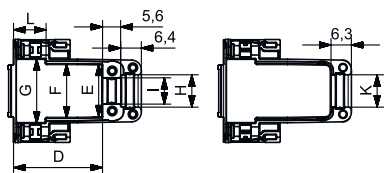
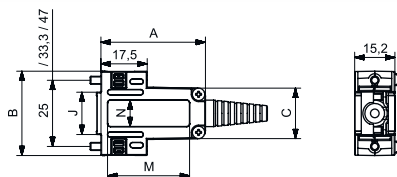
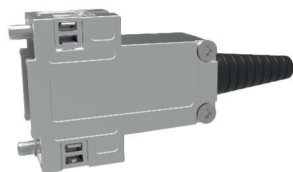
### Technical features

- Size  
9, 15 and 25
- Cable exit  
180°
- Locking types
  - Screw locking:  
Combined slot screw UNC 4-40 or M3
  - Tool-free quick locking: Quick Lock
- Slide lock:
  - Insert nut UNC 4-40 or M3 and no guide bar also for wall mounting usable
  - „Flying“ cable-to-cable connection:  
Insert nut UNC 4-40 or M3 and with guide bar
- Packaging
  - Set : all components in one poly bag
  - Bulk: volume packaging with 50 single parts each in one poly bag
- Product content
  - Retaining spring pre-assembled
  - Cable reduction pre-assembled
  - Internal cable clamp
  - Cable bushing

### Technical data

|   |   |
|---|---|
| <b>Degree of protection</b>             | IP 20   |
| <b>Temperature range</b>                | -55° C up to 90° C                              |
| <b>Shock and vibration</b>              | Kat. 2 and Kat 1 B EN 61373                     |
| <b>Cable diameter</b>                   | 9-pole: Ø 3 – 9,5 /<br>15 and 25-pole: Ø 4 – 11 |
| <b>Housing<br/>Material and plating</b> | Zn alloy Ni-plated                              |

## Screw locking version with combined slot screw



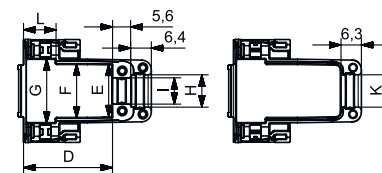
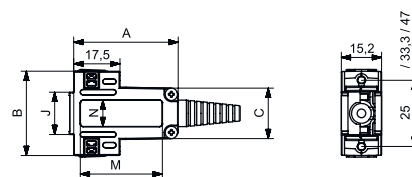
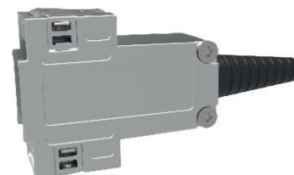
### Dimensions

| 9, 15, 25pol.   | Dimension |      |      |      |      |      |      |      |      |      |      |     |      |      |
|-----------------|-----------|------|------|------|------|------|------|------|------|------|------|-----|------|------|
| 21725X          | 45,0      | 54   | 33,0 | 33,0 | 33,8 | 39,0 | 39,0 | 12,3 | 10,9 | 37,8 | 12,3 | 9,2 | 34,5 | 30,0 |
| 21715X          | 41,0      | 40,2 | 24,1 | 29,0 | 23,2 | 24,8 | 28,3 | 12,3 | 10,9 | 24,0 | 12,3 | 9,2 | 31,5 | 17,0 |
| 21709X          | 39,5      | 31,9 | 19,1 | 27,5 | 16,6 | 16,8 | 20,0 | 10,0 | 8,2  | 16,0 | 10,0 | 9,2 | 31,0 | 10,0 |
| PVH-article-no. | A         | B    | C    | D    | E    | F    | G    | H    | I    | J    | K    | L   | M    | N    |

### Ordering information

| Size            | Size | Thread   | Packaging    |
|-----------------|------|----------|--------------|
| 2170901DCN18001 | 9    | UNC 4-40 | Set          |
| 2170903DCN18001 | 9    | M3       | Set          |
| 2171501DCN18001 | 15   | UNC 4-40 | Set          |
| 2171503DCN18001 | 15   | M3       | Set          |
| 2172501DCN18001 | 25   | UNC 4-40 | Set          |
| 2172503DCN18001 | 25   | M3       | Set          |
| 2170901DCN18000 | 9    | UNC 4-40 | Single parts |
| 2170903DCN18000 | 9    | M3       | Single parts |
| 2171501DCN18000 | 15   | UNC 4-40 | Single parts |
| 2171503DCN18000 | 15   | M3       | Single parts |
| 2172501DCN18000 | 25   | UNC 4-40 | Single parts |
| 2172503DCN18000 | 25   | M3       | Single parts |

## Quick locking version Quick Lock



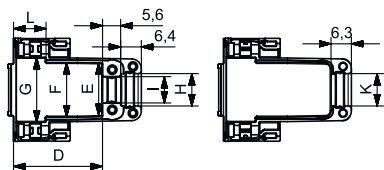
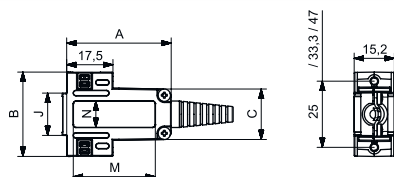
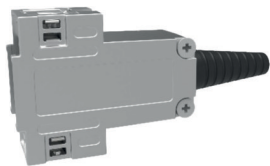
### Dimensions

| 9, 15, 25pol.   | Dimension |      |      |      |      |      |      |      |      |      |      |     |      |      |
|-----------------|-----------|------|------|------|------|------|------|------|------|------|------|-----|------|------|
| 21725X          | 45,0      | 54   | 33,0 | 33,0 | 33,8 | 39,0 | 39,0 | 12,3 | 10,9 | 37,8 | 12,3 | 9,2 | 34,5 | 30,0 |
| 21715X          | 41,0      | 40,2 | 24,1 | 29,0 | 23,2 | 24,8 | 28,3 | 12,3 | 10,9 | 24,0 | 12,0 | 9,2 | 31,5 | 17,0 |
| 21709X          | 39,5      | 31,9 | 19,1 | 27,5 | 16,6 | 16,8 | 20,0 | 10,0 | 8,2  | 16,0 | 10,0 | 9,2 | 31,0 | 10,0 |
| PVH-article-no. | A         | B    | C    | D    | E    | F    | G    | H    | I    | J    | K    | L   | M    | N    |

### Ordering information

| Size          | Size | Packaging    |
|---------------|------|--------------|
| 2170901DCN001 | 9    | Set          |
| 2171501DCN001 | 15   | Set          |
| 2172501DCN001 | 25   | Set          |
| 2170901DCN000 | 9    | Single parts |
| 2171503DCN000 | 15   | Single parts |
| 2172501DCN000 | 25   | Single parts |

### Slide locking version with insert nut and no guide bar



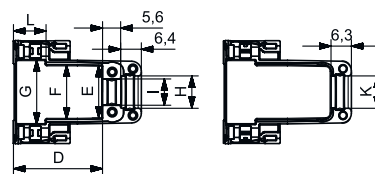
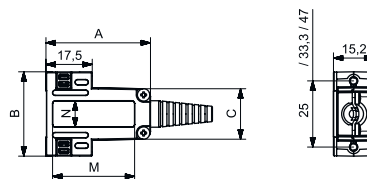
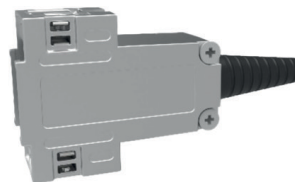
### Dimensions

| 9, 15, 25pol.   | Dimension |      |      |      |      |      |      |      |      |   |      |     |      |      |
|-----------------|-----------|------|------|------|------|------|------|------|------|---|------|-----|------|------|
| 21725X          | 45,0      | 54   | 33,0 | 33,0 | 33,8 | 39,0 | 39,0 | 12,3 | 10,9 |   | 12,3 | 9,2 | 34,5 | 30,0 |
| 21715X          | 41,0      | 40,2 | 24,1 | 29,0 | 23,2 | 24,8 | 28,3 | 12,3 | 10,9 |   | 12,3 | 9,2 | 31,5 | 17,0 |
| 21709X          | 39,5      | 31,9 | 19,1 | 27,5 | 16,6 | 16,8 | 20,0 | 10,0 | 8,2  |   | 10,0 | 9,2 | 31,0 | 10,0 |
| PVH-article-no. | A         | B    | C    | D    | E    | F    | G    | H    | I    | J | K    | L   | M    | N    |

### Ordering information

| Size          | Size | Thread   | Packaging    |
|---------------|------|----------|--------------|
| 2170951DCN001 | 9    | UNC 4-40 | Set          |
| 2170953DCN001 | 9    | M3       | Set          |
| 2171551DCN001 | 15   | UNC 4-40 | Set          |
| 2171553DCN001 | 15   | M3       | Set          |
| 2172551DCN001 | 25   | UNC 4-40 | Set          |
| 2172553DCN001 | 25   | M3       | Set          |
| 2170951DCN000 | 9    | UNC 4-40 | Single parts |
| 2170953DCN000 | 9    | M3       | Single parts |
| 2171551DCN000 | 15   | UNC 4-40 | Single parts |
| 2171553DCN000 | 15   | M3       | Single parts |
| 2172551DCN000 | 25   | UNC 4-40 | Single parts |
| 2172553DCN000 | 25   | M3       | Single parts |

### „Flying“ cable-to-cable connection with insert nut and with guide bar



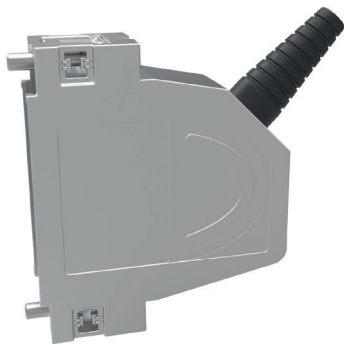
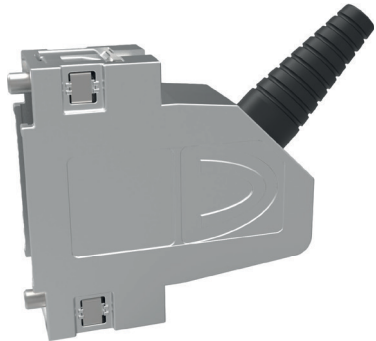
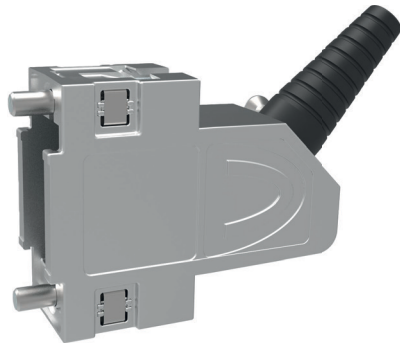
### Dimensions

| 9, 15, 25pol.   | Dimension |      |      |      |      |      |      |      |      |      |      |     |      |      |
|-----------------|-----------|------|------|------|------|------|------|------|------|------|------|-----|------|------|
| 21725X          | 45,0      | 54   | 33,0 | 33,0 | 33,8 | 39,0 | 39,0 | 12,3 | 10,9 | 37,8 | 12,3 | 9,2 | 34,5 | 30,0 |
| 21715X          | 41,0      | 40,2 | 24,1 | 29,0 | 23,2 | 24,8 | 28,3 | 12,3 | 10,9 | 24,0 | 12,3 | 9,2 | 31,5 | 17,0 |
| 21709X          | 39,5      | 31,9 | 19,1 | 27,5 | 16,6 | 16,8 | 20,0 | 10,0 | 8,2  | 16,0 | 10,0 | 9,2 | 31,0 | 10,0 |
| PVH-article-no. | A         | B    | C    | D    | E    | F    | G    | H    | I    | J    | K    | L   | M    | N    |

### Ordering information

| Size          | Size | Thread   | Packaging    |
|---------------|------|----------|--------------|
| 2170921DCN001 | 9    | UNC 4-40 | Set          |
| 2170923DCN001 | 9    | M3       | Set          |
| 2171521DCN001 | 15   | UNC 4-40 | Set          |
| 2171523DCN001 | 15   | M3       | Set          |
| 2172521DCN001 | 25   | UNC 4-40 | Set          |
| 2172523DCN001 | 25   | M3       | Set          |
| 2170921DCN000 | 9    | UNC 4-40 | Single parts |
| 2170923DCN000 | 9    | M3       | Single parts |
| 2171521DCN000 | 15   | UNC 4-40 | Single parts |
| 2171523DCN000 | 15   | M3       | Single parts |
| 2172521DCN000 | 25   | UNC 4-40 | Single parts |
| 2172523DCN000 | 25   | M3       | Single parts |

## Series 247:Cable exit 45°



The FLEXLOCK D-Sub hoods are as series 247 with angled cable exit (45°) available in 3 housing sizes for 9-pole, 15-pole and 25-pole D-Sub connectors

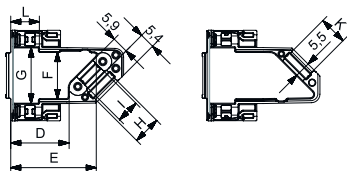
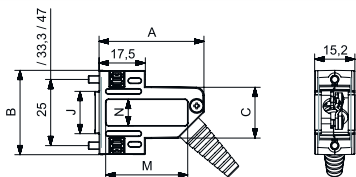
### Technical features

- Size  
9, 15 and 25
- Cable exit  
45°
- Locking types
  - Screw locking:  
Combined slot screw UNC 4-40 or M3 Tool-free quick locking: Quick Lock
  - Slide lock:  
Insert nut UNC 4-40 or M3 and no guide bar also for wall mounting usable
  - „Flying“ cable-to-cable connection:  
Insert nut UNC 4-40 or M3 and with guide bar
- Packaging
  - Set : all components in one poly bag
  - Bulk: volume packaging with 50 single parts each in one poly bag
- Product content
  - Retaining spring pre-assembled
  - Cable reduction pre-assembled
  - Internal cable clamp
  - Cable bushing

### Technical data

|   |   |
|---|---|
| <b>Degree of protection</b>             | IP 20   |
| <b>Temperature range</b>                | -55° C up to 90° C                              |
| <b>Shock and vibration</b>              | Kat. 2 and Kat 1 B EN 61373                     |
| <b>Cable diameter</b>                   | 9-pole: Ø 3 – 9,5 / 15 and<br>25-pole: Ø 4 – 11 |
| <b>Housing<br/>Material and plating</b> | Zn alloy Ni-plated                              |

## Screw locking version with combined slot screw



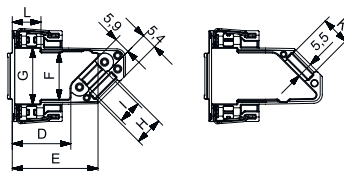
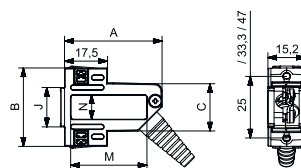
### Dimensions

| 9, 15, 25pol.   | Dimension |      |      |      |      |      |      |      |      |      |      |      |      |      |
|-----------------|-----------|------|------|------|------|------|------|------|------|------|------|------|------|------|
| 21725X          | 45,1      | 54,0 | 34,9 | 23,4 | 43,7 | 38,9 | 42,1 | 13,7 | 10,5 | 38,1 | 13,6 | 10,0 | 34,5 | 30,0 |
| 21715X          | 41,0      | 40,2 | 25,2 | 19,3 | 39,4 | 25,1 | 28,3 | 12,0 | 10   | 24,3 | 12,1 | 10,0 | 30,5 | 14,0 |
| 21709X          | 39,6      | 31,9 | 19,2 | 20,5 | 30,0 | 16,8 | 20,0 | 10,0 | 8,2  | 16,0 | 10,0 | 10,0 | 31,0 | 10,0 |
| PVH-article-no. | A         | B    | C    | D    | E    | F    | G    | H    | I    | J    | K    | L    | M    | N    |

### Ordering information

| Size            | Size | Thread   | Packaging    |
|-----------------|------|----------|--------------|
| 2470901DCN18001 | 9    | UNC 4-40 | Set          |
| 2470903DCN18001 | 9    | M3       | Set          |
| 2471501DCN18001 | 15   | UNC 4-40 | Set          |
| 2471503DCN18001 | 15   | M3       | Set          |
| 2472501DCN18001 | 25   | UNC 4-40 | Set          |
| 2472503DCN18001 | 25   | M3       | Set          |
| 2470901DCN18000 | 9    | UNC 4-40 | Single parts |
| 2470903DCN18000 | 9    | M3       | Single parts |
| 2471501DCN18000 | 15   | UNC 4-40 | Single parts |
| 2471503DCN18000 | 15   | M3       | Single parts |
| 2472501DCN18000 | 25   | UNC 4-40 | Single parts |
| 2472503DCN18000 | 25   | M3       | Single parts |

## Quick locking version Quick Lock



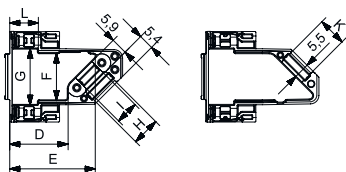
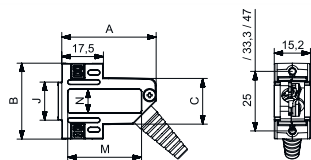
### Dimensions

| 9, 15, 25pol.   | Dimension |      |      |      |      |      |      |      |      |      |      |      |      |      |
|-----------------|-----------|------|------|------|------|------|------|------|------|------|------|------|------|------|
| 21725X          | 45,1      | 54,0 | 34,9 | 23,4 | 43,7 | 38,9 | 42,1 | 13,7 | 10,5 | 38,1 | 13,6 | 10,0 | 34,5 | 30,0 |
| 21715X          | 41,0      | 40,2 | 25,2 | 19,3 | 39,4 | 25,1 | 28,3 | 12,0 | 10   | 24,3 | 12,1 | 10,0 | 30,5 | 14,0 |
| 21709X          | 39,6      | 31,9 | 19,2 | 20,5 | 30,0 | 16,8 | 20,0 | 10,0 | 8,2  | 16,0 | 10,0 | 10,0 | 31,0 | 10,0 |
| PVH-article-no. | A         | B    | C    | D    | E    | F    | G    | H    | I    | J    | K    | L    | M    | N    |

### Ordering information

| Size          | Size | Packaging    |
|---------------|------|--------------|
| 2470901DCN001 | 9    | Set          |
| 2471501DCN001 | 15   | Set          |
| 2472501DCN001 | 25   | Set          |
| 2470901DCN000 | 9    | Single parts |
| 2471503DCN000 | 15   | Single parts |
| 2472501DCN000 | 25   | Single parts |

## Slide locking version with insert nut and no guide bar



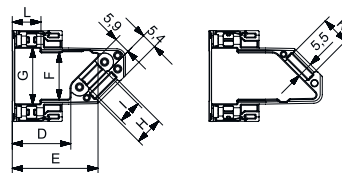
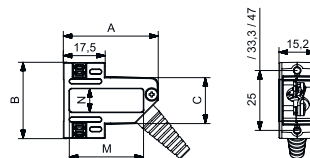
### Dimensions

| 9, 15, 25pol.   | Dimension |      |      |      |      |      |      |      |      |   |      |      |      |      |
|-----------------|-----------|------|------|------|------|------|------|------|------|---|------|------|------|------|
| 21725X          | 45,1      | 54,0 | 34,9 | 23,4 | 43,7 | 38,9 | 42,1 | 13,7 | 10,5 |   | 13,6 | 10,0 | 34,5 | 30,0 |
| 21715X          | 41,0      | 40,2 | 25,2 | 19,3 | 39,4 | 25,1 | 28,3 | 12,0 | 10   |   | 12,1 | 10,0 | 30,5 | 14,0 |
| 21709X          | 39,6      | 31,9 | 19,2 | 20,5 | 30,0 | 16,8 | 20,0 | 10,0 | 8,2  |   | 10,0 | 10,0 | 31,0 | 10,0 |
| PVH-article-no. | A         | B    | C    | D    | E    | F    | G    | H    | I    | J | K    | L    | M    | N    |

### Ordering information

| Size          | Size | Thread   | Packaging    |
|---------------|------|----------|--------------|
| 2470951DCN001 | 9    | UNC 4-40 | Set          |
| 2470953DCN001 | 9    | M3       | Set          |
| 2471551DCN001 | 15   | UNC 4-40 | Set          |
| 2471553DCN001 | 15   | M3       | Set          |
| 2472551DCN001 | 25   | UNC 4-40 | Set          |
| 2472553DCN001 | 25   | M3       | Set          |
| 2470951DCN000 | 9    | UNC 4-40 | Single parts |
| 2470953DCN000 | 9    | M3       | Single parts |
| 2471551DCN000 | 15   | UNC 4-40 | Single parts |
| 2471553DCN000 | 15   | M3       | Single parts |
| 2472551DCN000 | 25   | UNC 4-40 | Single parts |
| 2472553DCN000 | 25   | M3       | Single parts |

## „Flying“ cable-to-cable connection with insert nut and with guide bar



### Dimensions

| 9, 15, 25pol.   | Dimension |      |      |      |      |      |      |      |      |      |      |      |      |      |
|-----------------|-----------|------|------|------|------|------|------|------|------|------|------|------|------|------|
| 21725X          | 45,1      | 54,0 | 34,9 | 23,4 | 43,7 | 38,9 | 42,1 | 13,7 | 10,5 | 38,1 | 13,6 | 10,0 | 34,5 | 30,0 |
| 21715X          | 41,0      | 40,2 | 25,2 | 19,3 | 39,4 | 25,1 | 28,3 | 12,0 | 10   | 24,3 | 12,1 | 10,0 | 30,5 | 14,0 |
| 21709X          | 39,6      | 31,9 | 19,2 | 20,5 | 30,0 | 16,8 | 20,0 | 10,0 | 8,2  | 16,0 | 10,0 | 10,0 | 31,0 | 10,0 |
| PVH-article-no. | A         | B    | C    | D    | E    | F    | G    | H    | I    | J    | K    | L    | M    | N    |

### Ordering information

| Size          | Size | Thread   | Packaging    |
|---------------|------|----------|--------------|
| 2470921DCN001 | 9    | UNC 4-40 | Set          |
| 2470923DCN001 | 9    | M3       | Set          |
| 2471521DCN001 | 15   | UNC 4-40 | Set          |
| 2471523DCN001 | 15   | M3       | Set          |
| 2472521DCN001 | 25   | UNC 4-40 | Set          |
| 2472523DCN001 | 25   | M3       | Set          |
| 2470921DCN000 | 9    | UNC 4-40 | Single parts |
| 2470923DCN000 | 9    | M3       | Single parts |
| 2471521DCN000 | 15   | UNC 4-40 | Single parts |
| 2471523DCN000 | 15   | M3       | Single parts |
| 2472521DCN000 | 25   | UNC 4-40 | Single parts |
| 2472523DCN000 | 25   | M3       | Single parts |



# About us



## Certificates

- For your safety
  - IATF 16949
  - ISO 9001
- For our environment our production locations are ISO 14001 certified
- UL approvals



## 850 employees

- German-Hungarian company
- Production in Hungary
- Customer Service in Germany
- Satisfied customers



## More than 40 years of experience

- Products for highest physical stability in extremely challenging networks
- Many innovations
- Customer-specific solutions

**PROVERTHA**<sup>®</sup>  
CONNECTORS, CABLES & SOLUTIONS

FITTING **YOUR**  
APPLICATION

### Connectors, Cables & Solutions GmbH

Westring 9  
75180 Pforzheim · Germany  
Tel.: +49 7231 774 66  
Fax: +49 7231 774 44  
service@provertha.com  
provertha.com

