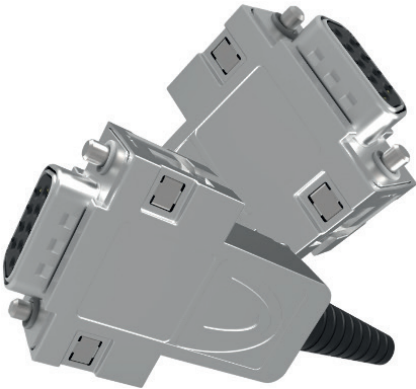


PROVERTHA®
CONNECTORS, CABLES & SOLUTIONS

FITTING **YOUR**
APPLICATION

FLEX**LOCK**



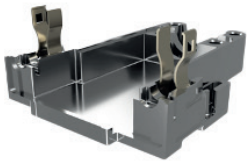
provertha.com

Flexible usage in demanding applications

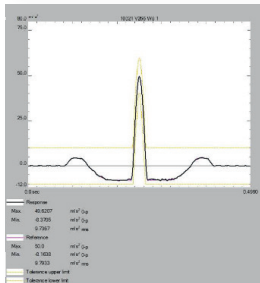


Patented multiple locking system in one nickel-plated D-Sub full metal hood

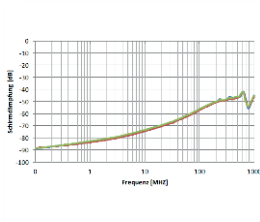
- Standard screw locking
- Quick Lock (Push-Pull) quick locking
- Slide lock
- „Flying“ cable-to-cable connection



- Functional reliability thanks to break-proof housing locking spring made of metal

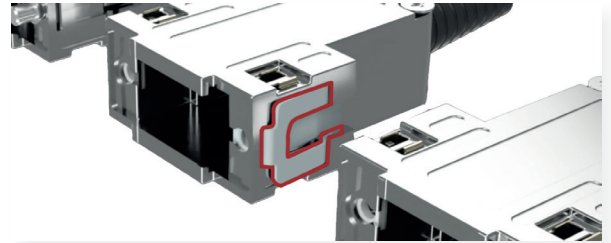


- For highest mechanical / dynamic stresses
Shock and vibration-proof
EN 61373 Category 2



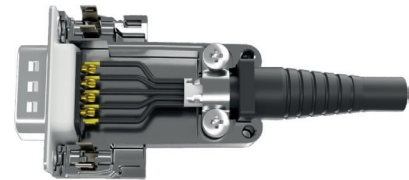
- For high EMC requirements achieved by special shielding design

Locking in seconds: Quick Lock Push Pull



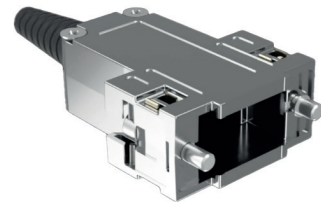
- Secure locking with an audible click when locked
- Shock and vibration-proof (certified EN 61373 Cat. 2)
- Blind locking in difficult installation locations simply push in until you click

Easy handling during assembly thanks to only few individual parts



- Retaining spring pre-assembled
- Cable reduction pre-assembled
- Locking screws or QL locking spring or insert nut pre-assembled
- A version with cover screws pre-mounted is available on request

Hood as a complete set protected in a bag



- The complete set includes the internal cable clamp and the cable bushing for direct assembly at the installation site
- The nickel-plated surface of the hoods is in a separate chamber of the two-chamber bag protected from scratches and damage

Series 217: Cable exit 180°



The FLEXLOCK D-Sub hoods are as series 217 with straight cable exit (180°) available in 3 housing sizes for 9-pole, 15-pole and 25-pole D-Sub connectors

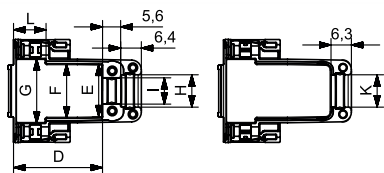
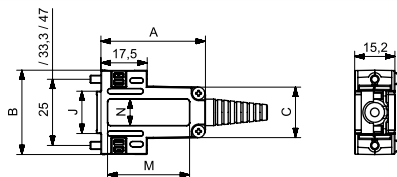
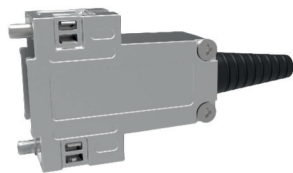
Technical features

- Size
9, 15 and 25
- Cable exit
180°
- Locking types
 - Screw locking:
Combined slot screw UNC 4-40 or M3
 - Tool-free quick locking: Quick Lock
- Slide lock:
 - Insert nut UNC 4-40 or M3 and no guide bar also for wall mounting usable
 - „Flying“ cable-to-cable connection:
Insert nut UNC 4-40 or M3 and with guide bar
- Packaging
 - Set : all components in one poly bag
 - Bulk: volume packaging with 50 single parts each in one poly bag
- Product content
 - Retaining spring pre-assembled
 - Cable reduction pre-assembled
 - Internal cable clamp
 - Cable bushing

Technical data

Degree of protection	IP 20
Temperature range	-55° C up to 90° C
Shock and vibration	Kat. 2 and Kat 1 B EN 61373
Cable diameter	9-pole: Ø 3 – 9,5 / 15 and 25-pole: Ø 4 – 11
Housing Material and plating	Zn alloy Ni-plated

Screw locking version with combined slot screw



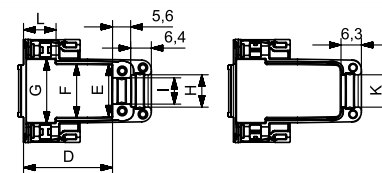
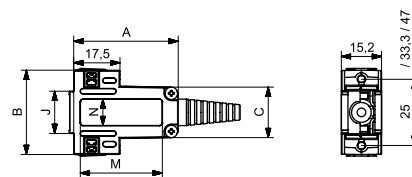
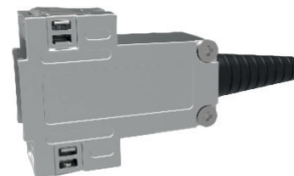
Dimensions

9, 15, 25pol.	Dimension													
21725X	45,0	54	33,0	33,0	33,8	39,0	39,0	12,3	10,9	37,8	12,3	9,2	34,5	30,0
21715X	41,0	40,2	24,1	29,0	23,2	24,8	28,3	12,3	10,9	24,0	12,3	9,2	31,5	17,0
21709X	39,5	31,9	19,1	27,5	16,6	16,8	20,0	10,0	8,2	16,0	10,0	9,2	31,0	10,0
PVH-article-no.	A	B	C	D	E	F	G	H	I	J	K	L	M	N

Ordering information

Size	Size	Thread	Packaging
2170901DCN18001	9	UNC 4-40	Set
2170903DCN18001	9	M3	Set
2171501DCN18001	15	UNC 4-40	Set
2171503DCN18001	15	M3	Set
2172501DCN18001	25	UNC 4-40	Set
2172503DCN18001	25	M3	Set
2170901DCN18000	9	UNC 4-40	Single parts
2170903DCN18000	9	M3	Single parts
2171501DCN18000	15	UNC 4-40	Single parts
2171503DCN18000	15	M3	Single parts
2172501DCN18000	25	UNC 4-40	Single parts
2172503DCN18000	25	M3	Single parts

Quick locking version Quick Lock



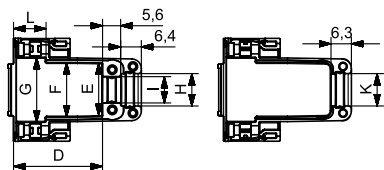
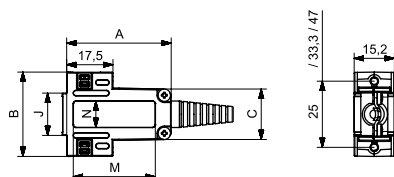
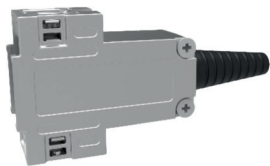
Dimensions

9, 15, 25pol.	Dimension													
21725X	45,0	54	33,0	33,0	33,8	39,0	39,0	12,3	10,9	37,8	12,3	9,2	34,5	30,0
21715X	41,0	40,2	24,1	29,0	23,2	24,8	28,3	12,3	10,9	24,0	12,0	9,2	31,5	17,0
21709X	39,5	31,9	19,1	27,5	16,6	16,8	20,0	10,0	8,2	16,0	10,0	9,2	31,0	10,0
PVH-article-no.	A	B	C	D	E	F	G	H	I	J	K	L	M	N

Ordering information

Size	Size	Packaging
2170901DCN001	9	Set
2171501DCN001	15	Set
2172501DCN001	25	Set
2170901DCN000	9	Single parts
2171503DCN000	15	Single parts
2172501DCN000	25	Single parts

Slide locking version with insert nut and no guide bar



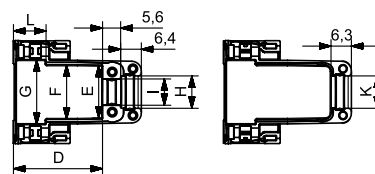
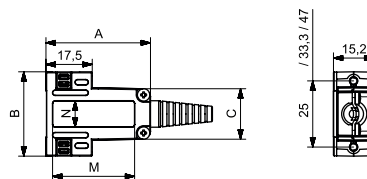
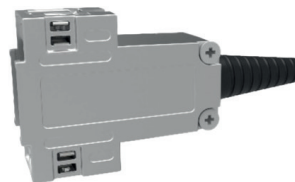
Dimensions

9, 15, 25pol.	Dimension													
21725X	45,0	54	33,0	33,0	33,8	39,0	39,0	12,3	10,9		12,3	9,2	34,5	30,0
21715X	41,0	40,2	24,1	29,0	23,2	24,8	28,3	12,3	10,9		12,3	9,2	31,5	17,0
21709X	39,5	31,9	19,1	27,5	16,6	16,8	20,0	10,0	8,2		10,0	9,2	31,0	10,0
PVH-article-no.	A	B	C	D	E	F	G	H	I	J	K	L	M	N

Ordering information

Size	Size	Thread	Packaging
2170951DCN001	9	UNC 4-40	Set
2170953DCN001	9	M3	Set
2171551DCN001	15	UNC 4-40	Set
2171553DCN001	15	M3	Set
2172551DCN001	25	UNC 4-40	Set
2172553DCN001	25	M3	Set
2170951DCN000	9	UNC 4-40	Single parts
2170953DCN000	9	M3	Single parts
2171551DCN000	15	UNC 4-40	Single parts
2171553DCN000	15	M3	Single parts
2172551DCN000	25	UNC 4-40	Single parts
2172553DCN000	25	M3	Single parts

„Flying“ cable-to-cable connection with insert nut and with guide bar



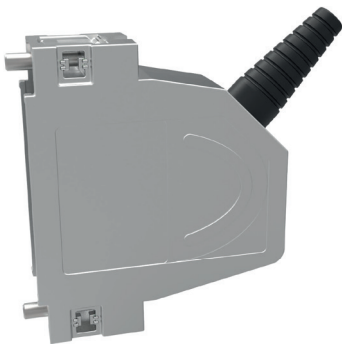
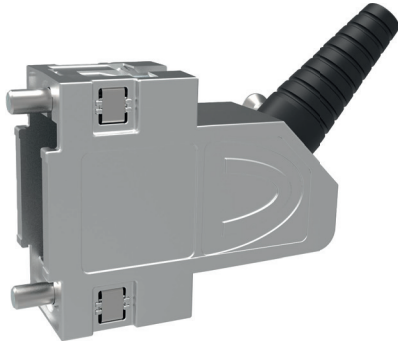
Dimensions

9, 15, 25pol.	Dimension													
21725X	45,0	54	33,0	33,0	33,8	39,0	39,0	12,3	10,9	37,8	12,3	9,2	34,5	30,0
21715X	41,0	40,2	24,1	29,0	23,2	24,8	28,3	12,3	10,9	24,0	12,3	9,2	31,5	17,0
21709X	39,5	31,9	19,1	27,5	16,6	16,8	20,0	10,0	8,2	16,0	10,0	9,2	31,0	10,0
PVH-article-no.	A	B	C	D	E	F	G	H	I	J	K	L	M	N

Ordering information

Size	Size	Thread	Packaging
2170921DCN001	9	UNC 4-40	Set
2170923DCN001	9	M3	Set
2171521DCN001	15	UNC 4-40	Set
2171523DCN001	15	M3	Set
2172521DCN001	25	UNC 4-40	Set
2172523DCN001	25	M3	Set
2170921DCN000	9	UNC 4-40	Single parts
2170923DCN000	9	M3	Single parts
2171521DCN000	15	UNC 4-40	Single parts
2171523DCN000	15	M3	Single parts
2172521DCN000	25	UNC 4-40	Single parts
2172523DCN000	25	M3	Single parts

Series 247:Cable exit 45°



The FLEXLOCK D-Sub hoods are as series 247 with angled cable exit (45°) available in 3 housing sizes for 9-pole, 15-pole and 25-pole D-Sub connectors

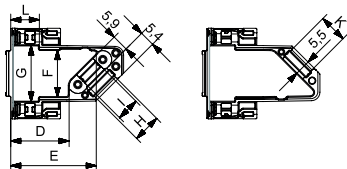
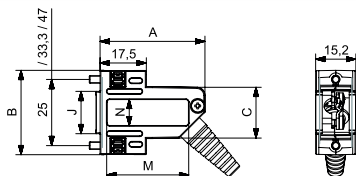
Technical features

- Size
9, 15 and 25
- Cable exit
45°
- Locking types
 - Screw locking:
Combined slot screw UNC 4-40 or M3 Tool-free quick locking: Quick Lock
 - Slide lock:
Insert nut UNC 4-40 or M3 and no guide bar also for wall mounting usable
 - „Flying“ cable-to-cable connection:
Insert nut UNC 4-40 or M3 and with guide bar
- Packaging
 - Set : all components in one poly bag
 - Bulk: volume packaging with 50 single parts each in one poly bag
- Product content
 - Retaining spring pre-assembled
 - Cable reduction pre-assembled
 - Internal cable clamp
 - Cable bushing

Technical data

Degree of protection	IP 20
Temperature range	-55° C up to 90° C
Shock and vibration	Kat. 2 and Kat 1 B EN 61373
Cable diameter	9-pole: Ø 3 – 9,5 / 15 and 25-pole: Ø 4 – 11
Housing Material and plating	Zn alloy Ni-plated

Screw locking version with combined slot screw



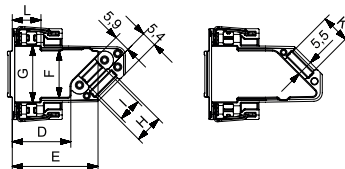
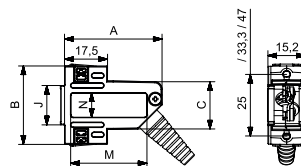
Dimensions

9, 15, 25pol.	Dimension													
21725X	45,1	54,0	34,9	23,4	43,7	38,9	42,1	13,7	10,5	38,1	13,6	10,0	34,5	30,0
21715X	41,0	40,2	25,2	19,3	39,4	25,1	28,3	12,0	10	24,3	12,1	10,0	30,5	14,0
21709X	39,6	31,9	19,2	20,5	30,0	16,8	20,0	10,0	8,2	16,0	10,0	10,0	31,0	10,0
PVH-article-no.	A	B	C	D	E	F	G	H	I	J	K	L	M	N

Ordering information

Size	Size	Thread	Packaging
2470901DCN18001	9	UNC 4-40	Set
2470903DCN18001	9	M3	Set
2471501DCN18001	15	UNC 4-40	Set
2471503DCN18001	15	M3	Set
2472501DCN18001	25	UNC 4-40	Set
2472503DCN18001	25	M3	Set
2470901DCN18000	9	UNC 4-40	Single parts
2470903DCN18000	9	M3	Single parts
2471501DCN18000	15	UNC 4-40	Single parts
2471503DCN18000	15	M3	Single parts
2472501DCN18000	25	UNC 4-40	Single parts
2472503DCN18000	25	M3	Single parts

Quick locking version Quick Lock



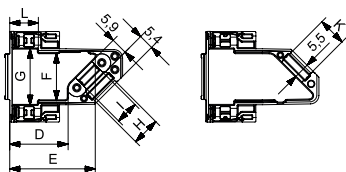
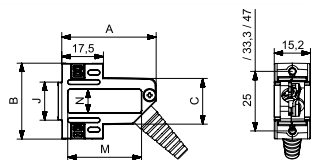
Dimensions

9, 15, 25pol.	Dimension													
21725X	45,1	54,0	34,9	23,4	43,7	38,9	42,1	13,7	10,5	38,1	13,6	10,0	34,5	30,0
21715X	41,0	40,2	25,2	19,3	39,4	25,1	28,3	12,0	10	24,3	12,1	10,0	30,5	14,0
21709X	39,6	31,9	19,2	20,5	30,0	16,8	20,0	10,0	8,2	16,0	10,0	10,0	31,0	10,0
PVH-article-no.	A	B	C	D	E	F	G	H	I	J	K	L	M	N

Ordering information

Size	Size	Packaging
2470901DCN001	9	Set
2471501DCN001	15	Set
2472501DCN001	25	Set
2470901DCN000	9	Single parts
2471503DCN000	15	Single parts
2472501DCN000	25	Single parts

Slide locking version with insert nut and no guide bar



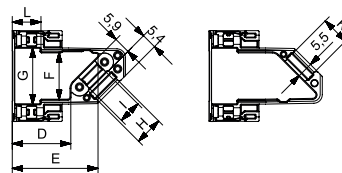
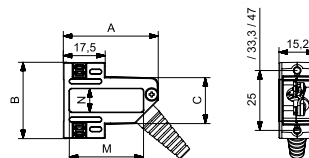
Dimensions

9, 15, 25pol.	Dimension													
21725X	45,1	54,0	34,9	23,4	43,7	38,9	42,1	13,7	10,5		13,6	10,0	34,5	30,0
21715X	41,0	40,2	25,2	19,3	39,4	25,1	28,3	12,0	10		12,1	10,0	30,5	14,0
21709X	39,6	31,9	19,2	20,5	30,0	16,8	20,0	10,0	8,2		10,0	10,0	31,0	10,0
PVH-article-no.	A	B	C	D	E	F	G	H	I	J	K	L	M	N

Ordering information

Size	Size	Thread	Packaging
2470951DCN001	9	UNC 4-40	Set
2470953DCN001	9	M3	Set
2471551DCN001	15	UNC 4-40	Set
2471553DCN001	15	M3	Set
2472551DCN001	25	UNC 4-40	Set
2472553DCN001	25	M3	Set
2470951DCN000	9	UNC 4-40	Single parts
2470953DCN000	9	M3	Single parts
2471551DCN000	15	UNC 4-40	Single parts
2471553DCN000	15	M3	Single parts
2472551DCN000	25	UNC 4-40	Single parts
2472553DCN000	25	M3	Single parts

„Flying“ cable-to-cable connection with insert nut and with guide bar



Dimensions

9, 15, 25pol.	Dimension													
21725X	45,1	54,0	34,9	23,4	43,7	38,9	42,1	13,7	10,5	38,1	13,6	10,0	34,5	30,0
21715X	41,0	40,2	25,2	19,3	39,4	25,1	28,3	12,0	10	24,3	12,1	10,0	30,5	14,0
21709X	39,6	31,9	19,2	20,5	30,0	16,8	20,0	10,0	8,2	16,0	10,0	10,0	31,0	10,0
PVH-article-no.	A	B	C	D	E	F	G	H	I	J	K	L	M	N

Ordering information

Size	Size	Thread	Packaging
2470921DCN001	9	UNC 4-40	Set
2470923DCN001	9	M3	Set
2471521DCN001	15	UNC 4-40	Set
2471523DCN001	15	M3	Set
2472521DCN001	25	UNC 4-40	Set
2472523DCN001	25	M3	Set
2470921DCN000	9	UNC 4-40	Single parts
2470923DCN000	9	M3	Single parts
2471521DCN000	15	UNC 4-40	Single parts
2471523DCN000	15	M3	Single parts
2472521DCN000	25	UNC 4-40	Single parts
2472523DCN000	25	M3	Single parts

About us



Certificates

- For your safety
 - IATF 16949
 - ISO 9001
- For our environment our production locations are ISO 14001 certified
- UL approvals



850 employees

- German-Hungarian company
- Production in Hungary
- Customer Service in Germany
- Satisfied customers



More than 40 years of experience

- Products for highest physical stability in extremely challenging networks
- Many innovations
- Customer-specific solutions

PROVERTHA[®]
CONNECTORS, CABLES & SOLUTIONS

FITTING **YOUR**
APPLICATION

Connectors, Cables & Solutions GmbH

Westring 9
75180 Pforzheim · Germany
Tel.: +49 7231 774 66
Fax: +49 7231 774 44
service@provertha.com
provertha.com

