

# PROVERTHA<sup>®</sup>

CONNECTORS, CABLES & SOLUTIONS

## Trade Fair News 2019

**Quick. Compact. Safe.**





## TMC D-Sub PCB

### High Performance Connectors for any application

#### Pressfit:

- Solderless termination for backplanes and PCBs

#### SMT:

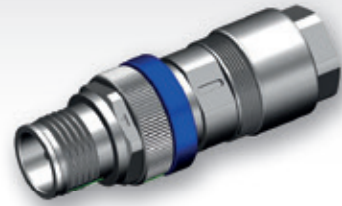
- For modern PCBs with fully automatic SMT assembly and solder process

#### THR:

- For the re-design of THT versions into THR versions with fully automatic SMT assembly and solder process

#### THT:

- Solder pin termination with a lot of mounting options for PCBs with wave soldering



## M12 Mini Cable Gland

### High Performance Connectors for compact reliable solutions

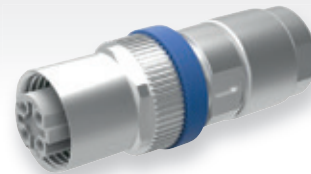
- Most compact M12 IP67 cable connector
- Very compact dimensions: L = 40/AD: Ø15/Ø14
- 10Gbit Ethernet and Profinet with M12 X-coded
- Ethernet and Profinet with version M12 D-coded
- Further codings available : A-5, A-8 and B
- Cable diameter: 4-9 mm
- Fully shielded version
- Plastics EN 45 545-2 certified for railway technology



## M12 X 180° und 90°

### Secure 10 Gbit Ethernet with crimp flange system

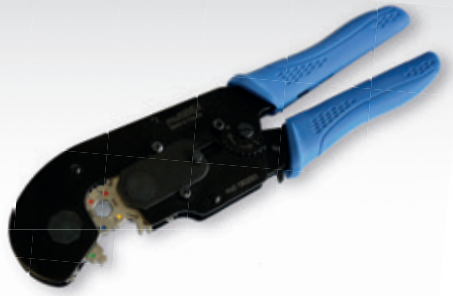
- 90°: Variable with 8 cable exit options (8x45°)
- Compact design
- Crossover versions for 1:1 wiring
- Shield connection torsion- and vibration-proof
- Strain relief torsion- and vibration-proof
- Plastics EN 45 545-2 certified for railway
- Shock and vibration EN 61373 certified for railway



## M12 Color coding ring

### Unmistakable interface connection

- For adjacent M12 interfaces
- Simple retrofitting
- Option for marking on color ring
- Various colors



## Hand crimp tool for crimp sleeves

### Universal due to Multicrimp die for 8 AF sizes

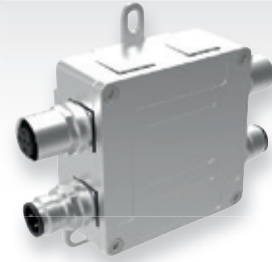
- One tool for all cable types
- 8 wrench sizes from AF 7 up to 10.5
- Easy to use
- Reliable crimp due to parallel crimping
- Precision-made hardened steel crimping tool
- Ratchet with safety release



## M8 V4A Stainless steel

### Robust and reliable in miniature format

- Robust due to high-quality stainless steel V4A
- Hygienic design for food&beverage
- Crimp flange/Crimp sleeve (CF): 360° Shielding
- Cable gland (KV): large cable clamping range



## Compact distribution box

### Robust and shielded and expandable

- Protection class: IP67
- 8 inputs/outputs
- Flexible due to connection options
- Connection: M12, M8, cable clamp, crimp flange
- Design for recessed top or bottom circuit board
- Full metal housing with 360° shielding design
- Multiple versions of the base box with adapter



## Modular mini distribution system

### Flexible and shielded and reliable

- Protection class: IP67
- Basic module with up to 5 inputs/outputs
- Flexible due to connection options
- Connection: M12, M8, cable clamp, crimp flange
- Full metal housing with 360° shielding design
- Fastening straps for wall mounting
- DIN rail clip for snap-on mounting on DIN rail

# About us



More than  
**35**  
years of  
experience

- Products for highest physical stability in extremely challenging networks
- Many innovations
- Customer-specific solutions



**850**  
employees

- German-Hungarian company
- Production in Hungary
- Customer Service in Germany
- Happy customers



**Certifi-  
cates**

- For your safety
- IATF 16949
- ISO 9001
- For our environment  
our production locations  
are ISO 14001 certified
- UL approvals

## PROVERTHA®

**Connectors, Cables & Solutions GmbH**

Westring 9 · 75180 Pforzheim

Tel.: +49 7231 774 66

Fax: +49 7231 774 44

service@provertha.com

www.provertha.com

