

PROVERTHA[®]

CONNECTORS, CABLES & SOLUTIONS

Cable Assembly

Individual. Fast. Safe.





UL certified cable assembly

Process reliable production and products through

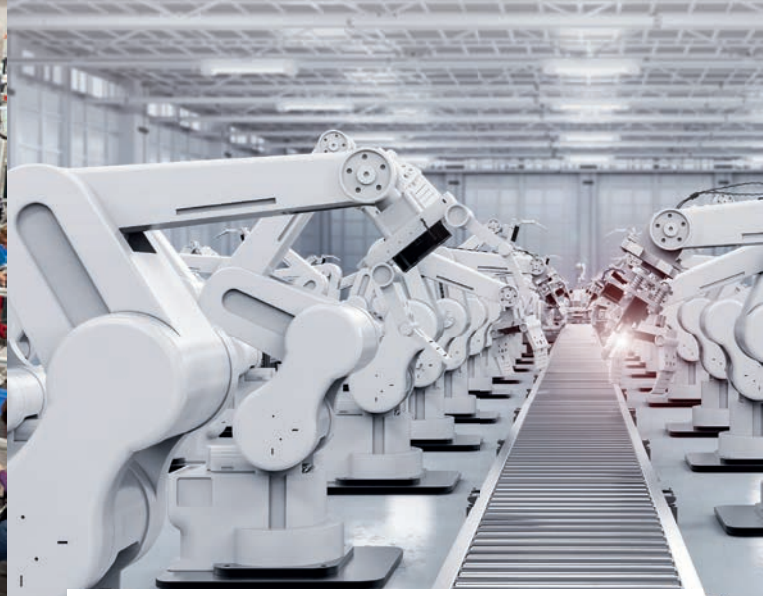
- Automatic single-wire production with Komax
- Round cable stripping with Schleuniger
- Crimping technology with crimper
- Crimp validation with crimp laboratory
- Soldering technology with robot
- Production machine for battery cables or power single cores with cable lug
- 100% final test with Eye of the customer

Overmolding with Macromelt and thermoplastics

Process reliable waterproof solutions due to automated potting

Automated bandaging

Process reliable automated shrink technology



Industrial Automation

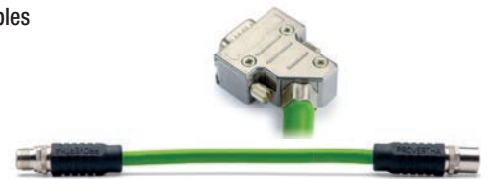
Small to medium sized lot sizes.

Standardised data cables M12 and Sub-D from stock.

Profibus



Data cables



Customized





Rail

Small to medium sized lot sizes

M12 cables



D Sub cables



Customized



Automotive

Medium to large sized lot sizes

Assembly groups



Control cables



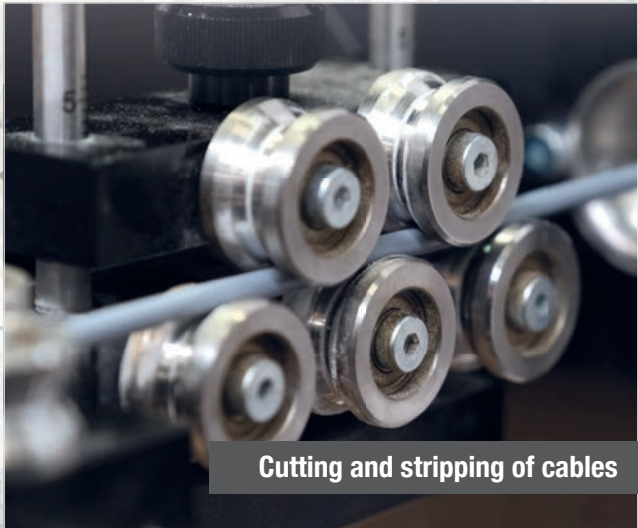
Sensor cables



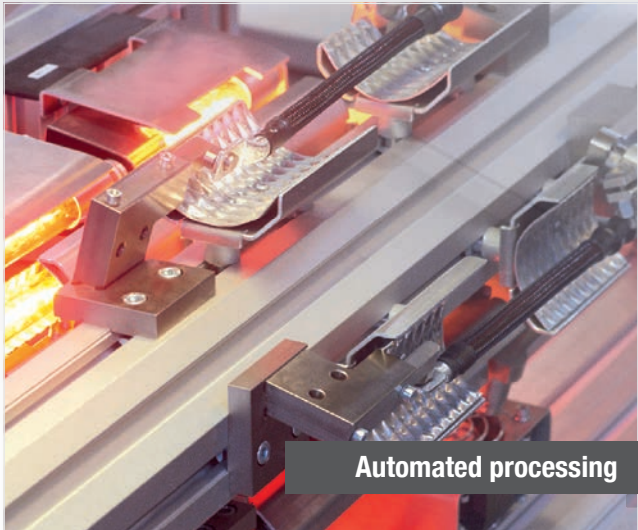
Processes / Technologies



Automated processing



Cutting and stripping of cables

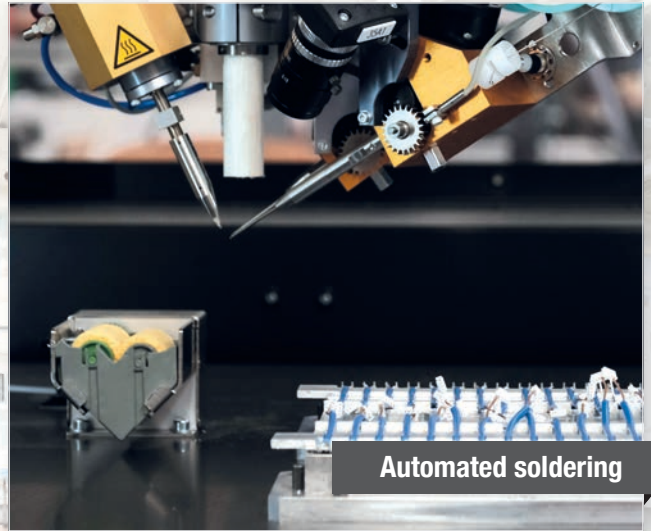


Automated processing

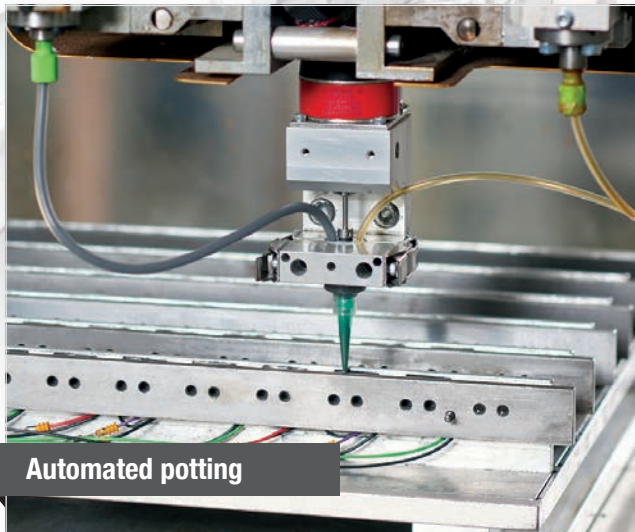
Processes / Technologies



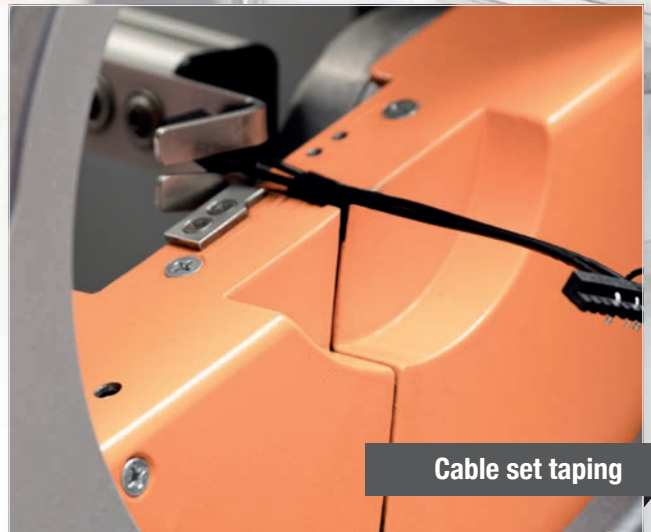
Crimping



Automated soldering



Automated potting



Cable set tapping

Processes / Technologies



Cable Overmoulding with Macromelt and plastic



Cable Overmoulding

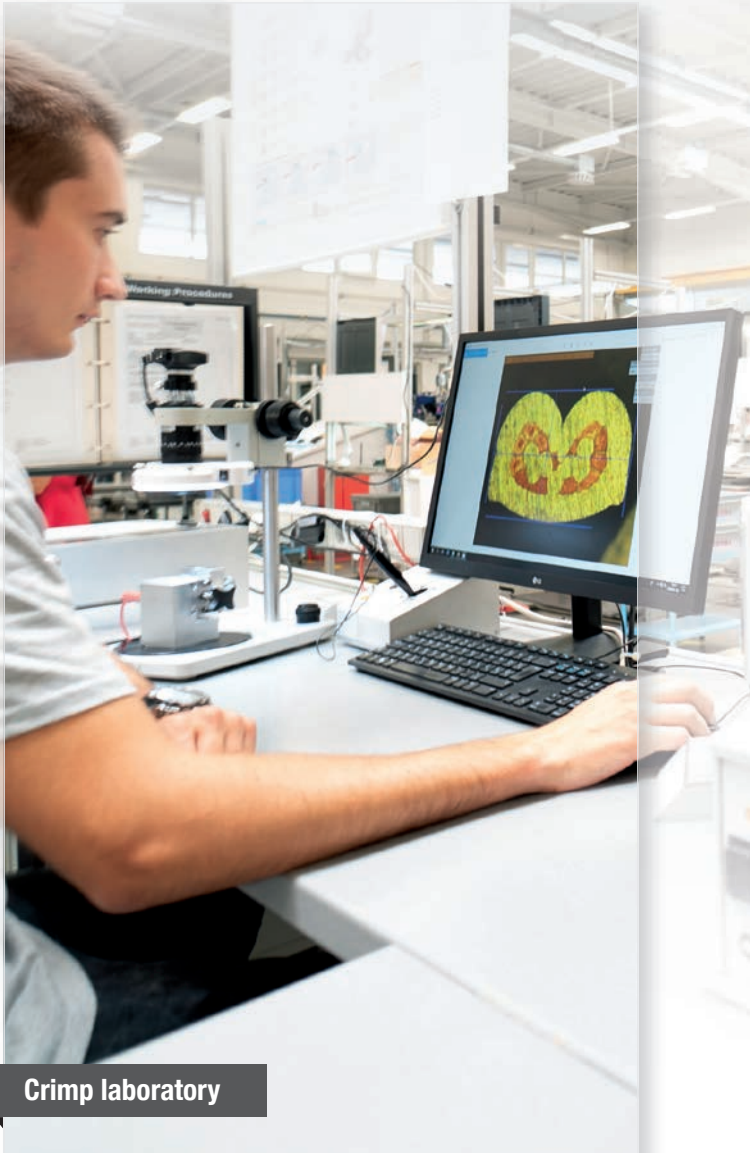
Manufacture



Manual assembly



Automated assembly



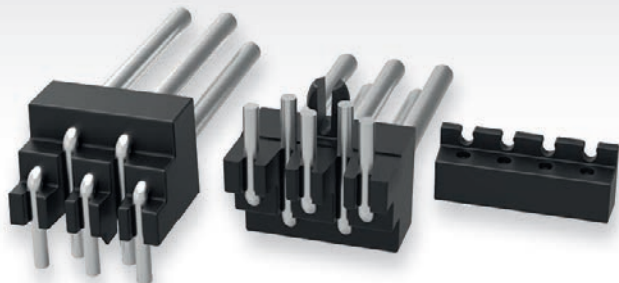
Crimp laboratory



X-ray



Electrical test



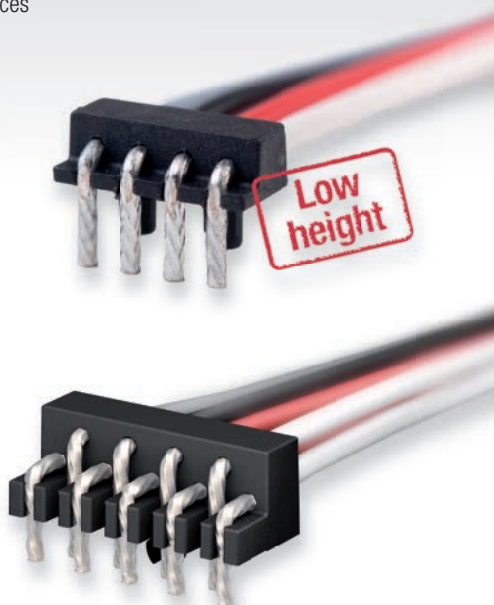
WireClip

Provertha WireClip

- Direct connection
- Connection 100% fail-safe
- Low height and small dimensions
- Integrated snap-in-clip for safe latching on the PCB
- Minimum assembly effort
- Assembled with customer-specific wire
- Minimum contact resistances
- High-temperature-plastic
- Defined grid dimension

Versions

- Low Profile WireClip
- WireClip straight
- WireClip angled
- WireClip two-rowed



PROVERTHA®

CONNECTORS, CABLES & SOLUTIONS

Sales Partner



COTELEC

1, rue de Terre Neuve
BP 90144
91944 Courtaboeuf cedex
France
Fon: +33 0(1)69 28 05 06
Fax: +33 0(1)69 28 63 96
Mail: infos@cotelec.fr
Internet: www.cotelec.fr



Motiv 8 Solutions

21 Tarrant Wharf
Arundel
BN18 9 NY West Sussex
United Kingdom
Fon: +44 -(0)-782 44 44 612
Mail: cosmotiv8@btinternet.com
Internet: www.provertha.com



SVK Elektronik s.r.o.

Slavtinská 142
190 14 Praha 9 Klánovice
Czech Republic
Fon: +420 281 021 310
Fax: +420 281 021 315
Mail: svk@svk.cz
Internet: www.svk.cz



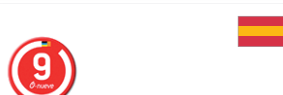
Provertha Electronic Components Zrt.

Ipartelep u. 16
9330 Kapuvár, Ungarn
Edit Bencsik
Fon: +36 95 520 517
Fax: +36 95 520 599
Mail: edit.bencsik@provertha.com



KMECS Co Ltd.

Yusen-Iwamotocho Bldg. 3F
2-3-3 IWAMOTO, CHIYODA-KU.
TOKYO 101-0032, Japan
Fon: +81-3-5825-5333
Fax: +81-3-5825-8550
Mail: h.hidaka@kmeecs.co.jp
Internet: www.kmeecs.com



O9 DIRECTO INDUSTRIA SLU

Avda IPARRALDE 44
20302 IRUN GIPUZKOA
España
Fon: +34 943051908
Mail: info@o9directoindustria.com
Internet:
www.o9directoindustria.com

About us



More than
35
years of
experience

- Products for highest physical stability in extremely challenging networks
- Many innovations
- Customer-specific solutions



850
employees

- German-Hungarian company
- Production in Hungary
- Customer Service in Germany
- Happy customers



Certifi-
cates

- For your safety
- IATF 16949
- ISO 9001
- For our environment
our production locations
are ISO 14001 certified
- UL approvals

PROVERTHA®

Connectors, Cables & Solutions GmbH

Westring 9 · 75180 Pforzheim

Tel.: +49 7231 774 66

Fax: +49 7231 774 44

service@provertha.com

www.provertha.com

