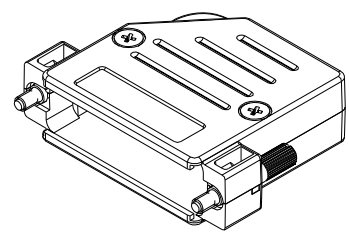
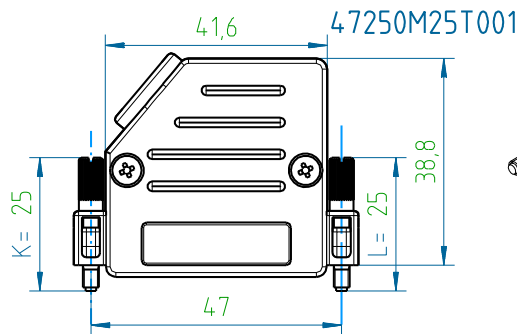
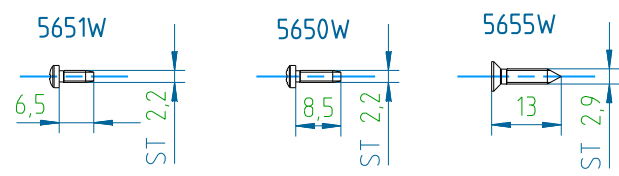
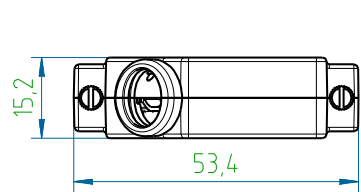


The reproduction, distribution and utilization of this document as well as the communication of its contents to others without express authorization is prohibited. Offenders will be held liable for the payment of damages. All rights reserved in the event of the grant of a patent, utility model or design.

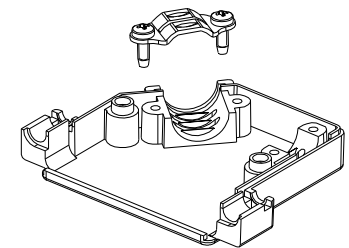
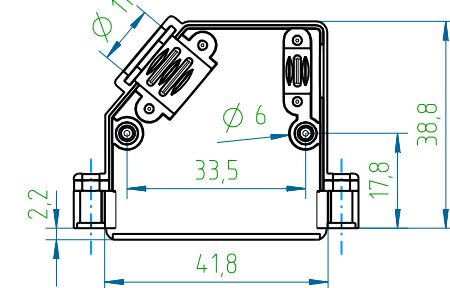
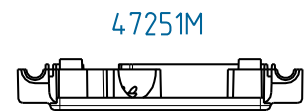


Nummernschlüssel / Numerical code: 47250BxxTVPE / 47250MxxTVPE.
 B - ABS Sicoflex S469 UL94 V-0 E103497, roh / raw
 M - ABS Polyac PA-765 UL94 V-0 E56070, Cu10/Ni5
 xx - Länge der Verriegelungsschrauben / Length of locking screws 4-40 UNC, mm:
 xx=48/38/25/18/00 (00 - ohne Verriegelungsschrauben / without locking screws)
 Beispiel für M3 / Example of M3: 47250MxxM3TVPE
 VPE - Verpackungseinheit 100 Stück / Packaging unit 100 pcs.
 VPE=000 - als Schüttgut / as bulk
 VPE=001 - als Set / as one hood packed as set

Zubehör - Werkstoff, Veredelung / Accessory - material, finishment:
 58258T - Bandstahl / band steel, Cu2/Sn4
 565xW - Einsatzstahl / case hardening steel, A3F DIN ISO 4042
 55xx4N - Automatenstahl / machining steel, Cu2,5/Ni2,5
 (solange Lagerbestand vorhanden / as available on stock: Cu2/Sn5)
 Beispiel mit 58254T anstatt 58258T / Example with 58254T instead of 58258T: 47250MxxTAVPE
 5650W - längere Blechschaube für Kabelklemme, bei Bedarf als Zubehör separat bestellen
 5650W - longer sheet metal screw for the cable clamp, must be ordered separately as accessory

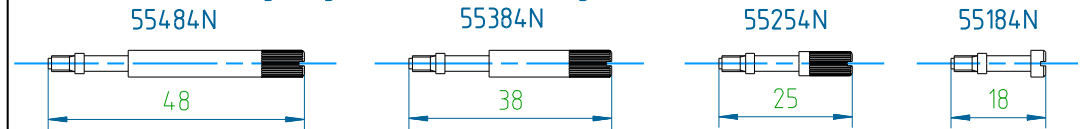


| | | | | | |
|-----------------------------------|--------------|------------|-------|---------------------|------|
| 47250B00T001 | 47250M00T001 | - | - | 12 | 14 |
| 47250B18T001 | 47250M18T001 | 18 | 18 | 15 | 17 |
| 47250B25T001 | 47250M25T001 | 25 | 25 | 15,5 | 17,5 |
| 47250B38T001 | 47250M38T001 | 38 | 25 | 16,5 | 18,5 |
| 47250B48T001 | 47250M48T001 | 48 | 25 | 17 | 19 |
| Version B | Version M | L, mm (xx) | K, mm | B | M |
| PVH-Artikel-Nr. / PVH-article no. | | | | Gewicht / weight, g | |

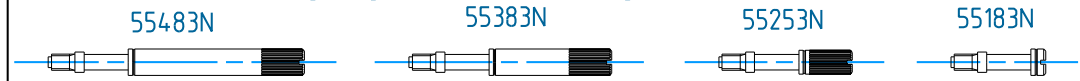


| | | | |
|--------|--------|---|---------------------------------------|
| 55xx4N | 55xx4N | 2 | Verriegelungsschraube / Locking screw |
| 5655W | 5655W | 2 | Blechschaube / Sheet metal screw |
| 5651W | 5651W | 2 | Blechschaube / Sheet metal screw |
| 58258T | 58258T | 1 | Kabelklemme / Cable clamp |
| 47252B | 47252M | 1 | Deckel / Cover |
| 47251B | 47251M | 1 | Gehäuse / Housing |

Verriegelungsschrauben / Locking screws 4-40 UNC:



Verriegelungsschrauben / Locking screws M3:



| | | | | | |
|-----------------------------------|--|--------------------------|--|-------------------------------|------------------------------------|
| 47250BxxTVPE | | 47250MxxTVPE | | Menge / QTY | Artikel-Bezeichnung / Article-name |
| PVH-Artikel-Nr. / PVH-article no. | | | | | |
| Toleranzen / tolerances: | | Projektion / projection: | | Maßstab / scale: | |
| DIN ISO 2768-m | | | | 1:1 | |
| Maßangaben in: dimension units: | | mm | | Werkstoff / material: | |
| | | | | Oberfläche cm² / surface cm²: | |
| | | | | Veredelung / refinement: | |
| | | | | Gewicht g / weight g: | |
| | | | | Benennung: name: | |
| | | | | Kunststoffhaube Gr.3 | |
| | | | | Plastic hood Size 3 | |
| | | | | Zeichnungs-Nr. / drawing no.: | |
| | | | | 47250MXXTVPE-P | |
| 04 neu gezeichnet | | 19.07.2013 Ast | | Blatt / sheet: | |
| Index | | Änderung / modification | | Datum | |
| | | | | Name | |
| | | | | Kd.-Zg.: | |
| | | | | Ersatz für / substitute for: | |
| | | | | DIN A3 | |